



Features

- **Aer Wall**, part of the Luminii PURIFII GUV product series, is an architectural grade upper-room germicidal system that capitalizes on the proven ability of UV-C to inactivate airborne pathogens continuously and safely in an occupied space. *Aer Wall disinfects an environment at a faster rate than HVAC alone, eliminating up to †99.98% of pathogens. *
- **BACKED BY SCIENCE** – We conduct **research and support third-party testing** to develop insights and expertise that deliver breakthrough products. **Worry-free**, our GUV product line is a safe and effective way to disinfect indoor environments.
- **MARKET PROVEN** – UV-C technology is proven, with over 40 years of research and real-world examples across diverse applications and scenarios, to support the disinfection of viruses, bacteria, mold spores, and fungi safely and effectively in the air and on surfaces, making it an ideal solution for a wide variety of high traffic applications.
- **SAFE AND EFFECTIVE** – PURIFII AER W is 100% safe in occupied environments. Businesses and the people within them are protected from potential viruses and other microorganisms.
- **CONTACTLESS** – PURIFII Aer Wall is 100% contactfree, featuring a profile that blends into a wide variety of environments with quiet ease. Customers can implement a hassle free, set it and forget GUV system they can feel good about, giving them a renewed sense of confidence.
- **ENTIRE ROOM DISINFECTION** – Whether it is a reception area, ballroom, fitness center, or other common area, germicidal lighting is an effective way of supporting existing cleaning protocols while addressing viral aerosols and contaminated surfaces at a much larger scale.
- **FLEXIBLE AND DISCREET** – The PURIFII GUV platform is designed to be extremely versatile, supporting even the trickiest of applications with ease. PURIFII systems require minimal to no maintenance once installed, keeping you and your business on track.
- Suitable for DRY and DAMP locations
- Warranty: 5 years or 20K hours, whichever comes first
- Operating temperature: 15° – 30°C
- Finish: ■ Black

Typical Applications

- **RETAIL** – Restore shopper confidence, support employee wellness, and invite loyal customers back to stores with architectural, discreet GUV solutions.
- **HOTELS** – Reinvigorate the guest experience, enhancing existing cleaning protocols with GUV solutions, giving guests and employees greater peace of mind.
- **RESTAURANTS** – Rekindle the dining experience by adding GUV systems to ensure high touch food prep zones and dining environments are clean and safe for patrons and staff.
- **FITNESS CENTERS** – Breathe easier by adding GUV systems to regular cleaning protocols to help maintain healthy and safe spaces for members, trainers, and staff.
- **SCHOOLS** – Inspire students, teachers, and staff by creating healthy learning environments with GUV systems, supporting the disinfection of classrooms, cafeterias, libraries, gyms, and hallways.
- **ASSISTED LIVING** – Renew a sense of independence by helping safeguard environments with GUV systems supporting a wide range of applications, including dining, fitness, and recreational facilities.
- **COMMERCIAL OFFICES** – Build confidence with teams and clients by supporting business measures that protect the health and safety of employees in a fast and efficient way with GUV systems.

*(reference IES committee report CR-2-20-V1a)

PURIFII Aer Wall is not intended for use as a medical device and is not registered as such. PURIFII Aer Wall is registered as a pesticide device.

† Based on Luminii's testing at an independent BSL3 lab using SARS-CoV2. Contact factory for more information. PURIFII is a trademark of Luminii, LLC., Luminii is a registered trademark of Luminii, LLC.

"Disinfection", "treatment", and "germicidal" as used herein are general in nature and not intended to implicate defined regulatory terms.

Technical Information

	2' AER-W	
	Remote Power Supply	Integral Power Supply
UV Output		
Total Initial Power	SO - 326mW	SO - 326mW
Total Power	17W	21W
Operating Parameters	34 – 36VDC, 475mA	120–277VAC
Peak Wavelength	275 nm	275 nm

	4' AER-W	
	Remote Power Supply	Integral Power Supply
UV Output		
Total Initial Power	SO - 652mW	SO - 652mW
Total Power	32W	38W
Operating Parameters	34 – 36VDC, 950mA	120–277VAC
Peak Wavelength	275 nm	275 nm



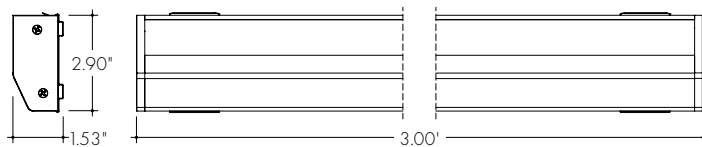
Aer Wall
Integrated Power Supply



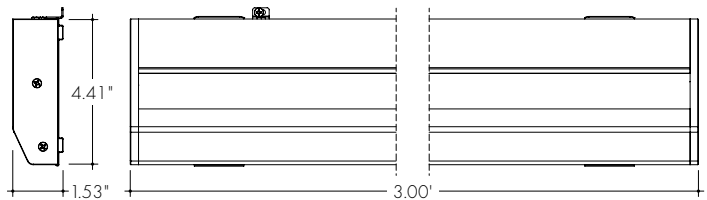
Aer Wall
Remote Power Supply

Product Dimensions

Aer Wall
Remote Power Supply



Aer Wall
Integrated Power Supply



Ordering Code

MODEL	LENGTH	OUTPUT	MOUNTING	FINISH	POWER FEED POSITION/TYPE
AER-W	2	SO	FC	BK	R*

AER-W - Aer Wall Mount

2 - 2'
4 - 4'

SO - Standard

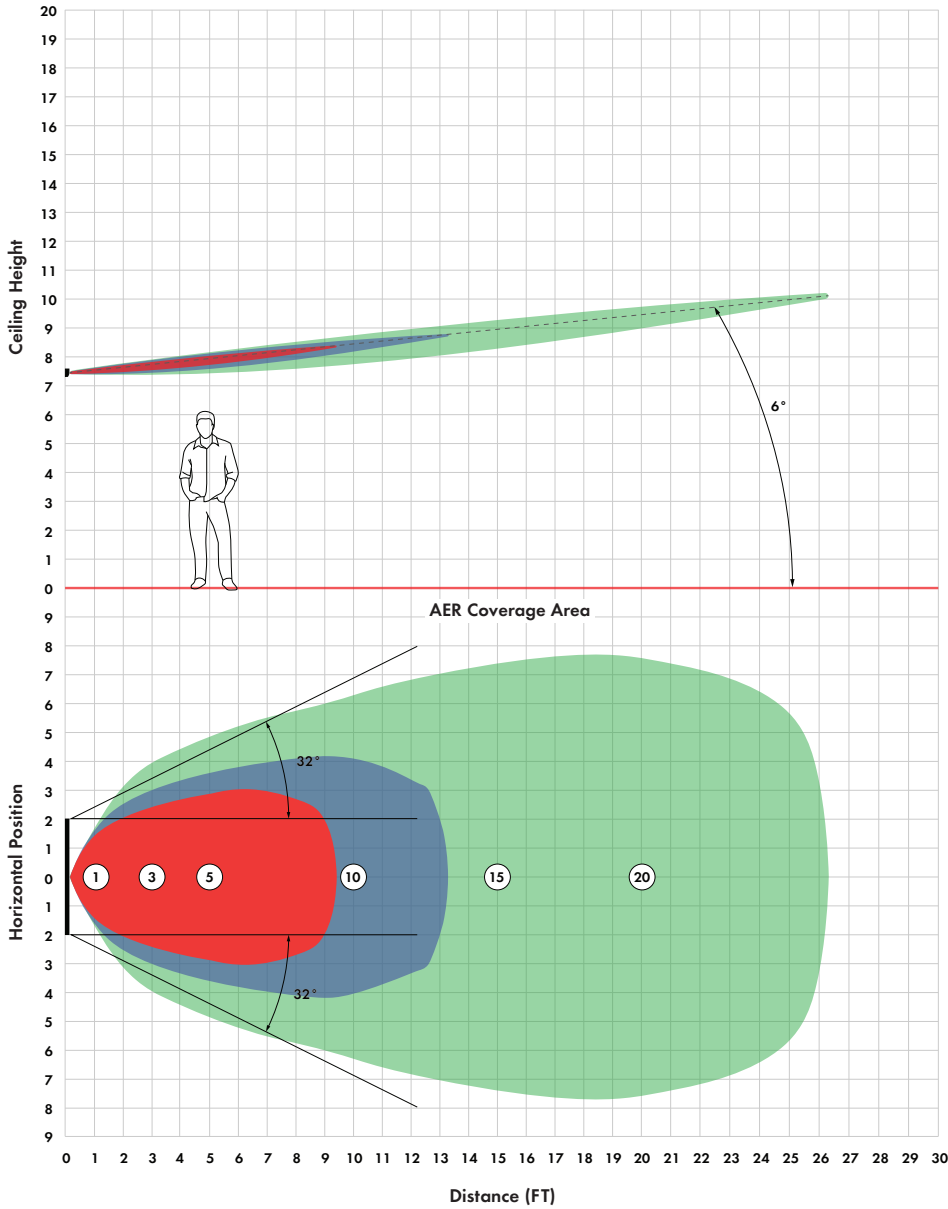
FC - Fixed Clip

BK - Black

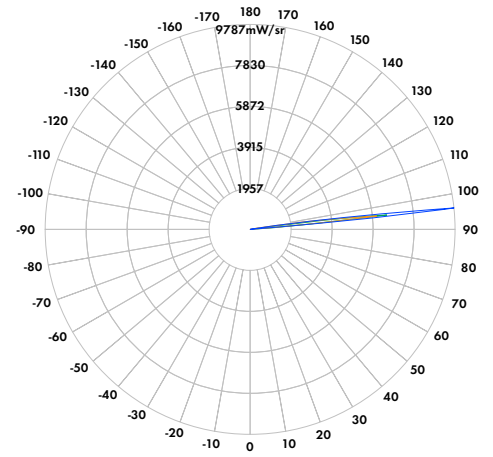
R* - Remote
INT - Integrated Driver

*Power supply ordered separately

ISO Irradiance Curve Regions



Polar Candela Distribution

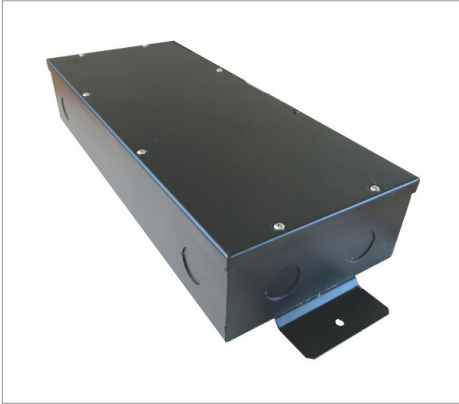


Zonal Output Summary		
Zone	mW	% Fixture
0 – 90	1.3	0.2%
90 – 120	616.2	98.6%
120 – 180	7.3	1.2%
0 – 180	624.8	100%

UV Irradiance	
Color Section	Irradiance
■	>10 $\mu\text{W}/\text{cm}^2$
■	>30 $\mu\text{W}/\text{cm}^2$
■	>50 $\mu\text{W}/\text{cm}^2$

Distance From Sensor (ft)	1	3	5	10	15	20
Irradiance Readings for 4ft Fixture ($\mu\text{W}/\text{cm}^2$)	1341.3	372.91	164.08	50.132	21.528	13.019

0-10V 50W Constant Current LED Driver



Features

Constant current 0-10V controlled LED Driver features eldoLED's LINEARdrive configurable 0-10V driver rated at 50 watt each. Suitable for damp location.

Technical Information

Input Voltage

120-277VAC,
0.7A, 50/60Hz

Output Current

475mA, 950mA

Output Voltage Range

2-55V

Maximum Wattage

50 Watts

Mounting

Surface mounted with conduit access

Operating Temperature

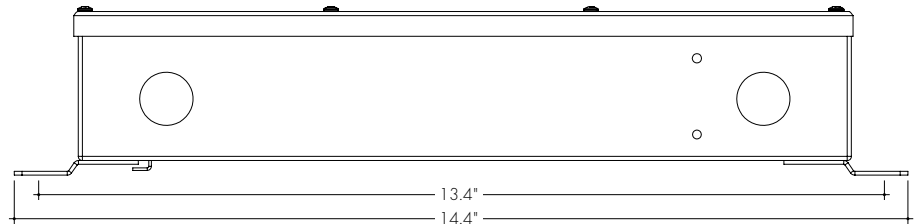
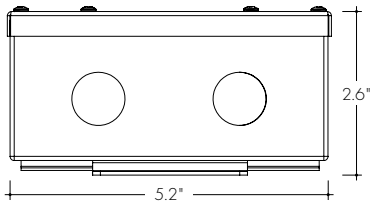
-15°C - 30°C

Ambient Operating Temperature

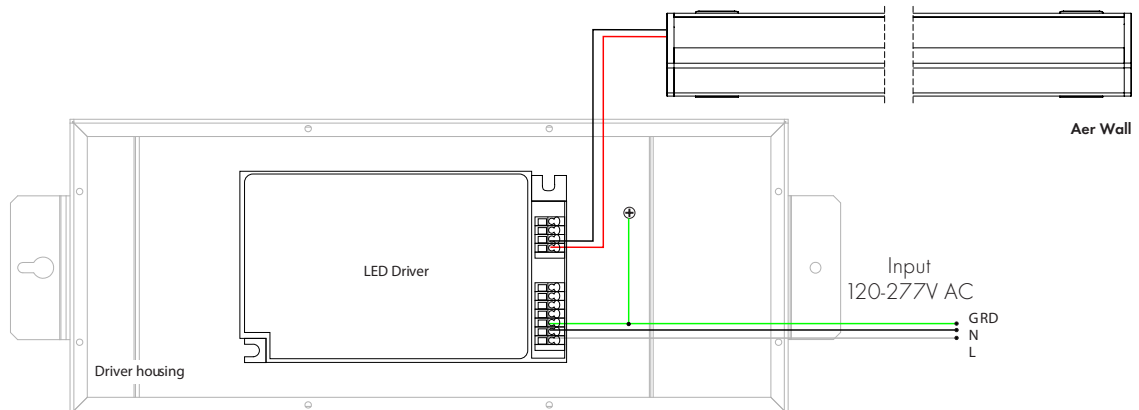
-20°C to + 35°C

TYPE IC

Product Dimensions



Wiring Diagram



Ordering Code

MODEL	FIXTURE LENGTH	
PS010V-CC	1	2F
PS010V-CC - Constant Current 0-10V LED Driver	1 - Single Fixture	2F - 2 Foot Fixture (475mA) 4F - 4 Foot Fixture (950mA)